

Disney
Winnie
the
Pooh

THE NEW MUSICAL
STAGE ADAPTATION

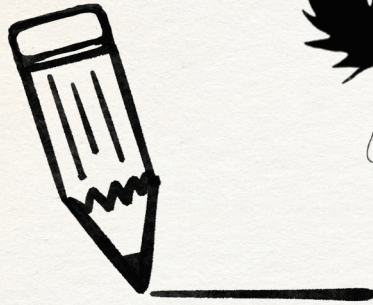
Created by Jonathan Rockefeller

SEPTEMBER 25-27, 2022



THE
PARAMOUNT
THEATRE

Connect The Dots!



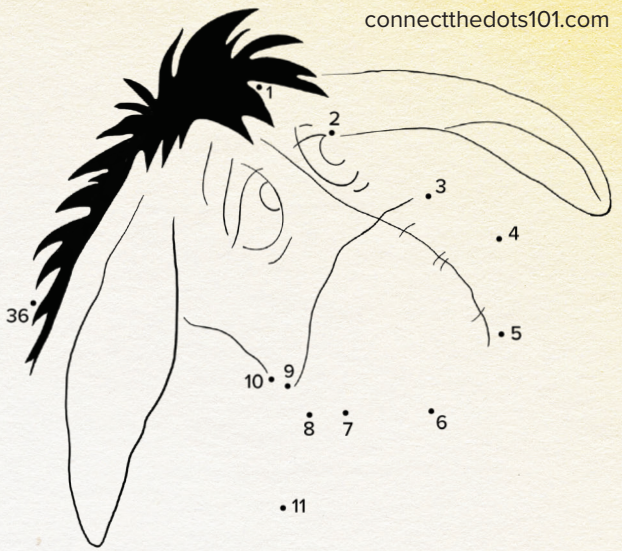
33

32

31
30
29

35

36

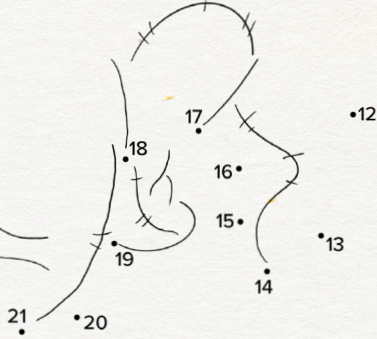


28

31
30

27
26
25

22
21



Hidden Objects

Can you find these hidden objects in the photo of this Hundred-Acre Wood party?



Finger Puppets

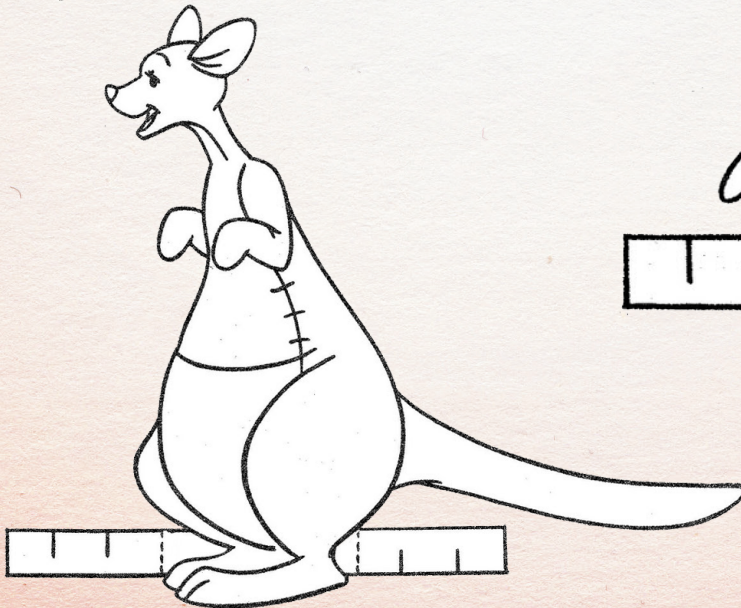
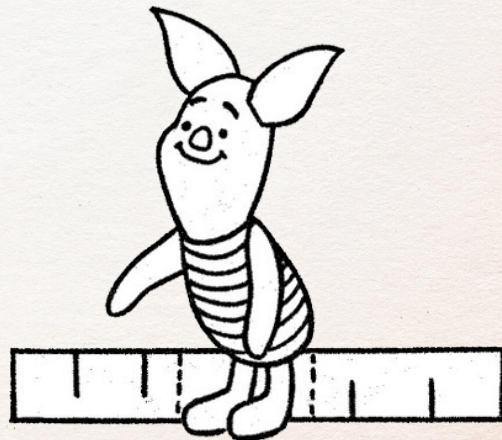
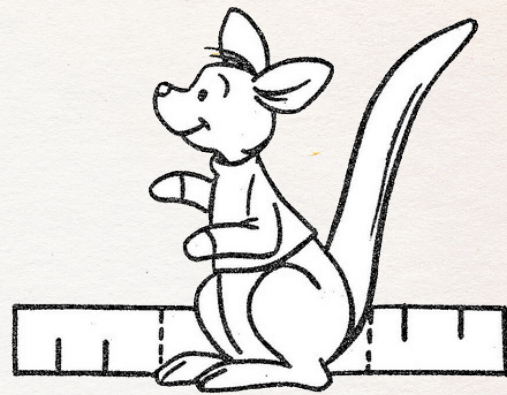
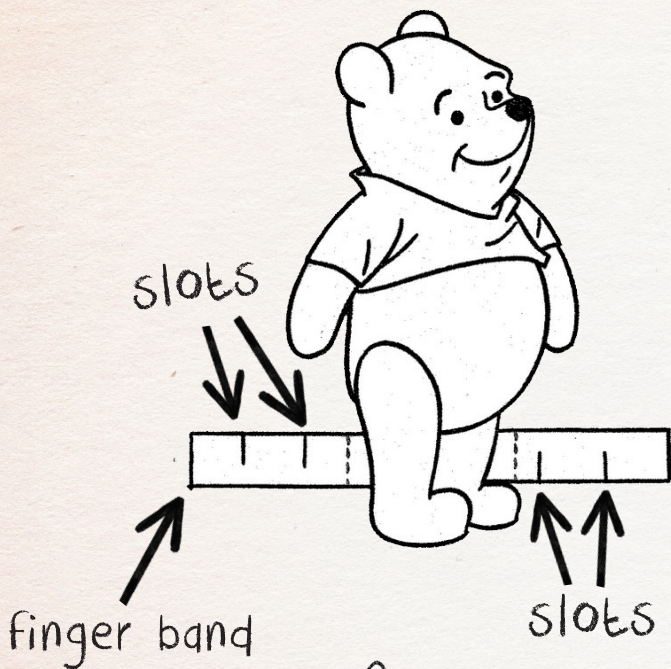
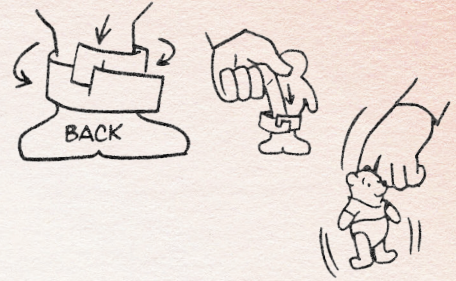
In the show, they use puppets to tell the story. Use these templates to create your own puppets of Winnie the Pooh characters!

Step 1: Color the Characters

Step 2: Carefully cut out the puppet including the finger band at their feet. Have an adult help if needed.

Step 3: On the finger band, cut the little black tick marks to create slots for securing around your finger.

Step 4: Wrap the finger band around your finger and interlock the slots to secure.



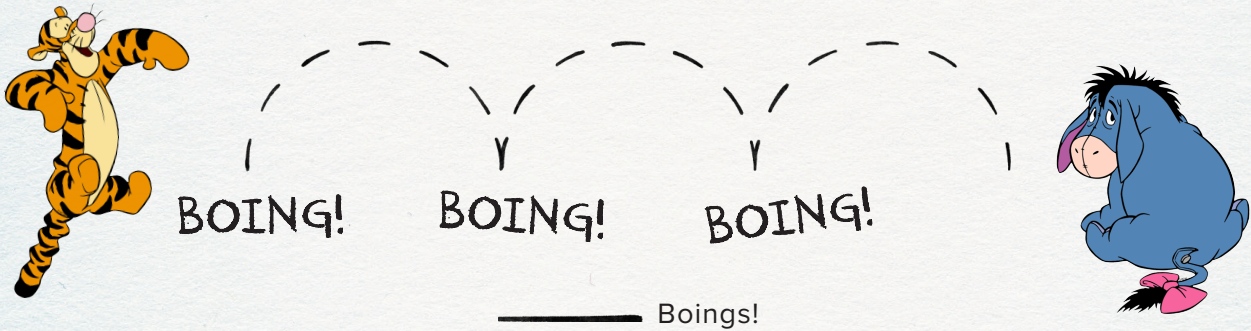
DESIGN YOUR OWN "HUNNY" POT

Color and design your own "Hunny" jar!
What will you put in your jar?



COUNTING FUN!

1. Eeyore is feeling sad, so Tigger wants to cheer him up! How many BOINGS does it take Tigger to get to Eeyore?



2. Rabbit loves growing carrots! How many carrots does Rabbit have?



3. If Rabbit gives 3 carrots to Kanga, then how many carrots will Rabbit have?



Rockefeller



About Rockefeller Productions

This production is created by renowned family entertainment creator Jonathan Rockefeller and made by Rockefeller Productions alongside Disney Theatrical Productions. Following record-breaking premieres in New York City and Chicago, the Hundred Acre Wood is heading across the US this fall! Learn more at rockefellerproductions.com

About A. A. Milne

Alan Alexander Milne was born in London in 1882. He wrote *Winnie the Pooh* for his son, Christopher. He even named one of the characters, Christopher Robin, after his son! Most of the characters in *Winnie the Pooh* are based off toys that Christopher actually owned.

Bring Your Stuffed Animals to Life!

What stuffed animals do you have? Draw what they would look like if they were living characters like Winnie the Pooh!





The Paramount Theatre

was built 106 years ago in 1915. Back then, Congress Avenue was a dirt road and the automobile was a new invention. As one of the first examples of early theatre architecture, the Paramount has been bringing Austin families together for generations. When you visit the theatre, you enter a place that feels exciting and welcoming. From your seat, you can almost reach out and touch the performers on stage! Many famous people have performed at the Paramount. From magician Harry Houdini to the premier of the original Batman movie, the Paramount and its audiences have seen it all over the past 100 years...here's to the next century!



SUNDAY, FEBRUARY 5TH

Paramount Education

We inspire the intellect and imagination of young people by providing opportunities to **experience, perform, and learn** through the arts. We can't wait to see you again at our theatre or in our school programs! Paramount Education programs are made possible through generous donations from our community. If you are interested in finding out more or want to make a contribution, please reach out to Krystal Parsons at kparsons@austintheatre.org. Thank you!

THANK YOU TO OUR 2022-2023 EDUCATION PARTNERS

| | | | | | | | | |
|--|--|--|--|--|--|--|--|---|
| | | | | | | | Diane and Jim Cano | The Powell Foundation |
| | | | | | | | ECG Foundation | The Seawell Elam Foundation |
| | | | | | | | Carol K. Engler Foundation | The Speedwell Foundation |
| | | | | | | | ET Films LLC | Kristi and Blake Stanford |
| | | | | | | | Gerald N. and Helen B. McAllister Fund | Wayne and JoAnn Moore Charitable Foundation |
| | | | | | | | Mo-ti Productions LLC | The Wright Family Foundation |
| | | | | | | | Montandon Charitable Trust | |

THANK YOU TO OUR 2022-2023 THEATRE PARTNERS

| | | | | | | | |
|--|--|--|--|--|--|--|--|
| | | | | | | | |
| | | | | | | | |
| | | | | | | | |